

Pretty Izzy Dolls

a knitting pattern by Esther Braithwaite Designs

Construction

Pretty Izzy Dolls are knit in one piece from the bottom-up. The doll's body can be knit flat on straight needles and seamed, or knit in the round on dpns. After knitting, the skirt is worked from stitches picked up around the doll's waist. Simple sewing techniques are used to define the arms and legs after knitting. Fast and fun to make, these dolls are sturdy, safe, and perfect for even the littlest hands to hold.

Gauge

Exact gauge is not important. I recommend choosing a needle 2 or 3 sizes smaller than recommended on the ball band to create a dense fabric that will keep the stuffing hidden. The chart below lists suggested gauge and finished sizes for the yarns I typically use.

Fingering	DK/Sport	Worsted
US1 2.25 mm	US 3 3.0mm	US 5 3.5mm
8 sts and 11 rows/inch	6.5 sts and 9 rows/inch	5 sts and 7 rows/inch
4 ¾ inches tall x 2 ¼ " wide	5 ¼ inches tall x 2 ¾ " wide	6 inches tall x 3" wide



Yarn

Models are knit from Stylecraft Special DK.

Abbreviations

CO = cast on; K = knit; K2tog = Knit 2 stitches together; Kfb= K in the front and back of the same stitch; P = purl; RS = right side; St(s) = stitch(es); WS = wrong side



Pretty Izzy Dolls

a knitting pattern by Esther Braithwaite Designs

Circular Knitting Instructions

Loosely cast on 32 stitches in black, leaving a long tail for seaming.

Arrange stitches evenly on 4 needles (8,8,8,8).

Refer to chart, or knit from pattern as follows:

SHOES

Rounds 1-2 Knit in black

Round 3 Knit 11 sts black, 3 stitches white, 4 stitches black, 3 stitches white, knit black to end of round.

Round 4 Knit in black

SOCKS

Rounds 5-8 Knit in white

LEGS

Rounds 9-14 Knit in skin colour

BODICE

Rounds 15-30 Knit in dress colour

FACE

Rounds 31-38 Knit in skin colour

HAIR

Rounds 39-42 Knit in brown

Round 43 (begin decreases) K1, *Knit 4 K2tog, repeat from * to last stitch, K1.

Round 44 (and alternate even rows) Knit

Round 45 K1, * Knit 3 K2tog, repeat from * to last stitch, K1.

Round 47 K1, * Knit 2, K2 tog, repeat from *to last stich, K1.

Round 49 K1, * Knit 1, K2 tog, repeat from *to last stich, K1.

Round 51 K1, * K2 tog, repeat from *to last stich, K1.

Draw yarn through remaining stitches and pull to close. Secure yarn.

Ruffle Skirt



Pick up 32 stitches around the doll's waist. Arrange evenly on 4 dpns (8,8,8,8). Join skirt color. **With doll held upside down**, work the skirt as follows:

Round 1 Knit

Round 2 *K1, Kfb, repeat from * around

Round 3 Knit

Round 4 *K1, Kfb, repeat from * around

Rounds 5-6 Knit

Round 7 Purl.

Cast off purlwise.



Pretty Izzy Dolls

a knitting pattern by Esther Braithwaite Designs

Lace Skirt

Pick up 32 stitches around the doll's waist. Join skirt color. **With doll held upside down**, work the skirt as follows:

Set Up:

Round 1 Kfb twice, *K1, Kfb. Repeat from *around (49 stitches)

Round 2 Knit. Arrange stitches on 4 dpns (14,14,14,7)

Lace Pattern (see lace chart):

Round 3 K1 K2tog YO K1 YO S1 K1 PSSO K1. Repeat around.

Round 4 Knit

Round 5 K2tog YO K3 YO S1 K1 PSSO.

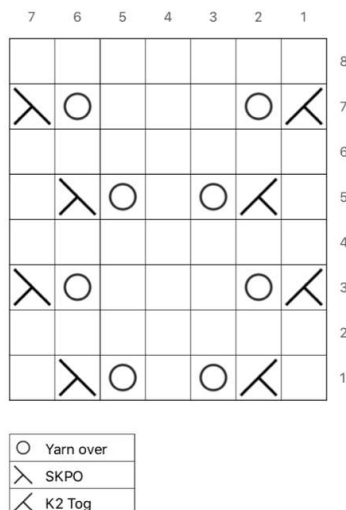
Repeat around.

Round 6 Knit

Repeat Lace pattern once more for knee length dress, or twice more for floor-length gown.

Round 15 Purl.

Round 16 Cast off purlwise.



Finishing Instructions

Refer to page



Pretty Izzy Dolls

a knitting pattern by Esther Braithwaite Designs

Straight Knitting Variation

Loosely cast on 34 stitches in black leaving a long tail for seaming.

Knit from pattern as follows:

SHOES

Row 1 Knit

Row 2 Purl

Round 3 Knit 12 sts black, 3 stitches white, 4 stitches black, 3 stitches white, knit black to end of round.

Round 4 Purl in black

SOCKS

Rows 5-8 (Continue in white) Work in stockinette stitch, knitting the RS (odd) rows and purling the WS (even) rows.

LEGS

Rows 9-14 (Join skin colour) Work in stockinette stitch.

BODICE

Rows 15-30 (Join dress colour) Work in stockinette stitch.

FACE

Rows 31-38 (Join skin colour) Work in stockinette stitch.

HAIR

Rows 39-42 (Join hair colour) Work in stockinette stitch for four rows.

Row 43 (begin decreases) K2, *Knit 4 K2tog, repeat from * to last two stitches, K2.

Row 44 (and all even (WS) rows) Purl.

Row 45 K2, * Knit 3 K2tog, repeat from * to last two stitches, K2.

Round 47 K2, * Knit 2, K2 tog, repeat from * to last two stitches, K2.

Round 49 K2, * Knit 1, K2 tog, repeat from * to last two stitches, K2.

Round 51 K2, * K2 tog, repeat from * to last two stitches, K2.

Draw yarn through remaining stitches and pull to close. Secure yarn.

Ruffle Skirt

Pick up 34 stitches around the doll's waist. **With doll held upside down**, work the skirt as follows:

Row 1 Knit

Row 2 (and all WS – even -- rows) Purl.

Row 3 *K1, Kfb, repeat from * around

Row 5 *K1, Kfb, repeat from * around

Row 7 Purl

Cast off knitwise.

SEAM DOLL

Using tail from top of head, sew the sides of the doll together with an invisible seam.

SEAM SKIRT

Using tail from cast off edge, sew the sides of the skirt together with an invisible seam.



Pretty Izzy Dolls

a knitting pattern by Esther Braithwaite Designs

Lace Skirt

Pick up 34 stitches around the doll's waist. Join skirt color. **With doll held upside down**, work the skirt as follows:

Set Up:

Row 1 K1, Kfb twice, *K1, Kfb. Repeat from * to last stitch. K1. (51 stitches)

Row 2 Purl.

Lace Pattern (see lace chart):

Row 3 K1. *K1 K2tog YO K1 YO S1 K1 PSSO K1. Repeat from * to last stitch. K1.

Row 4 Purl.

Row 5 K1. *K2tog YO K3 YO S1 K1 PSSO. Repeat from * to last stitch. K1.

Row 6 Purl.

Repeat lace pattern twice more.

Row 15 Purl.

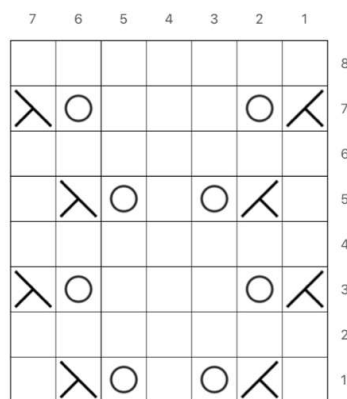
Row 16 Cast off knitwise.

SEAM DOLL

Using tail from top of head, sew the sides of the doll together with an invisible seam.

SEAM SKIRT

Using tail from cast off edge, sew the sides of the skirt together with an invisible seam.



Pretty Izzy Dolls

a knitting pattern by Esther Braithwaite Designs

Finishing Instructions

Stuff head.

Sew a running stitch of matching yarn across the first face row, then stuff the head firmly. Draw up to form neck and knot securely. Do not cut ends, as you will use these to define arms as noted below.

Stuff body.

Sew a running stitch of matching yarn across cast-on edge, then stuff the body loosely. Draw up to close bottom of doll and knot securely. Do not cut ends as you will use this to define the legs.

Define legs.

Begin at the back middle seam, and pull yarn through to the front middle. Using the chart as a guide, count 16 stitches from the back middle seam to the front. Keeping the first few stitches loose can also help guide a straight seam. Pull snugly to create leg definition as you continue to a few rows below the sweater. Fasten yarn securely.

Define arms.

Using ends from neck seam, define arms with tiny backstitches through all layers. Begin your arms 3 rows down from neck and 4 stitches from back seam. Arms are 8 stitches wide. Secure yarn and pull through body to hide ends. Repeat on opposite side for second arm.

Embroider Eyes

Embroider eyes in black. Pull a strand of black yarn under both legs of a stitch. Knit 3 horizontal stitches in the same stitch, then pull the needle through the doll and bring up at the opposite side for the second eye. Make 3 horizontal stitches, then pull the needle through the doll and bring up beside original yarn tail. Tie a knot to fasten yarn securely, then pull through body of doll to hide ends.

Cheeks

Referring to photo for placement, add small circles of powdered blush using a cotton swab.



Pretty Izzy Dolls

a knitting pattern by Esther Braithwaite Designs

Straight Hair

Cut 12 pieces of yarn to 6" lengths.

Insert a crochet hook through both 'legs' of a knit stitch.

Fold one of your strands of hair in half and pull through your knitted stitch, keeping the loop on your crochet hook.

Wrap both ends of the strand of hair around your crochet hook and pull through your loop to secure.

I like to add six strands of hair. I usually add two rows of three stitches directly over the shoulders of the doll. It helps to attach the bottom row first.

Once the hair is attached, you can style it into braids or pigtails.

Curly Hair

Wrap yarn tightly in a single layer around a wooden skewer or dowel (I use old bamboo dpns.)

Put wrapped dowels in a colander in the sink and dampen yarn thoroughly with hot water.

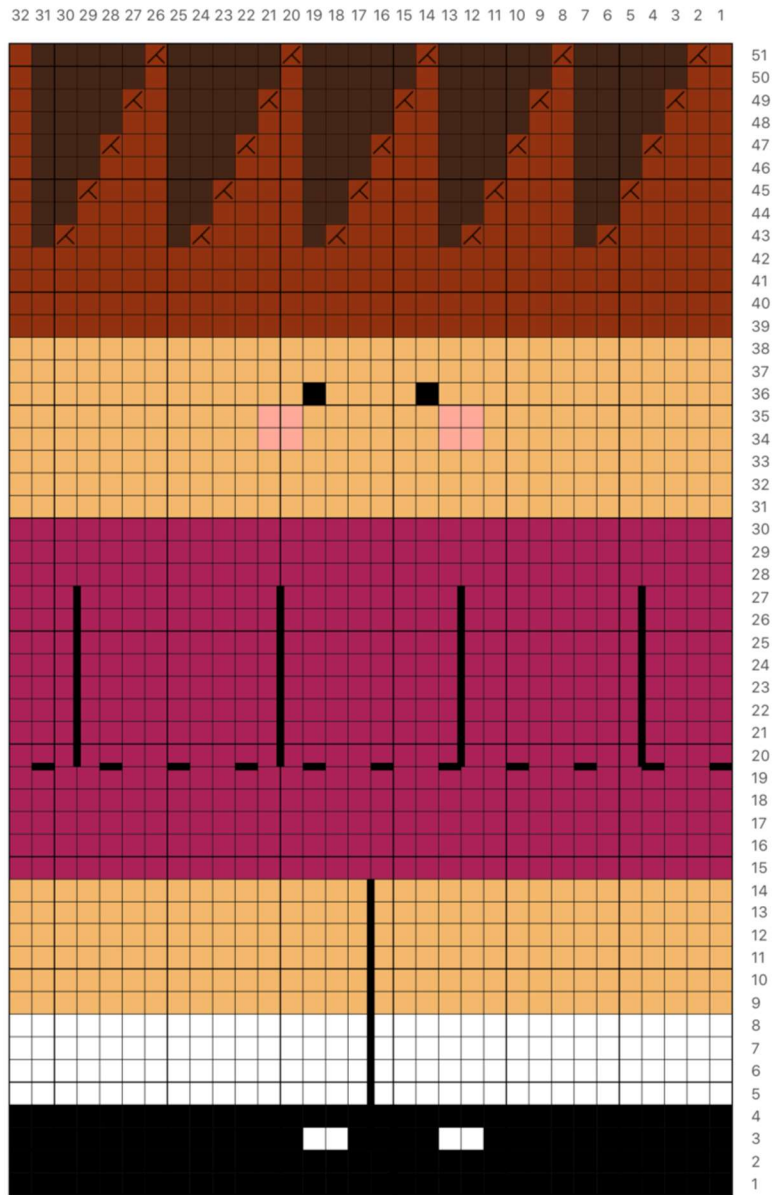
Transfer to a baking sheet. Place in 200-degree Fahrenheit oven for 30 minutes.

When cool, pull from end to release the coiled yarn from dowel. Cut into desired lengths. Attach as above.



Pretty Izzy Dolls

a knitting pattern by Esther Braithwaite Designs



	Tog/K2 Tog
	No stitch
	Blush placement

***NOTE: Chart reflects stitch count (32 stitches) for CIRCULAR KNITTING only. ***

When knitting the pattern on straight needles you must add 1 stitch to either side of the pattern for seaming (34 stitches required)*

